



- 1 1.440 Sounders per day.**  
Sounding every minute. 24 automatic sounders every day with 60 sounders per hour eco-integration.



- 2 Airmar Transducer.**  
World leader in ultrasonic sensor technology for marine applications.



- 3 System permanently open.**  
Requests at any time with immediate response. Permanently open communications. Global coverage.



- 4 Double sounder presentation.**



**Scientific Mode:** 1.6 m/layer resolution. Sounder and Echogram.

**Summary Mode:** 6 m/layer resolution. Historical sounder in vertical mode.

- 5 Vertical Sounder System.**

Inertial system that ensures sounding in a vertical position.



## OPERATION MODE

### Automatic Mode

- » Automatically sends **24 soundings** daily
- » 60 sounders per hour **eco-integration**.
- » 1 sounder **per minute**.
- » **Fishing concentration** every hour.
- » Automatically sends **24 GPS positions** daily.

### Manual Mode

- » **Fortuna Mode.** Sends 5 sounders.
- » **Tracking Mode.** 8 positions every 15 min.
- » **Position Mode.** Sends GPS position.

### IRIDIUM System permanently open

- » Always open. **Immediate response.**

## FEATURES

### Dimensions and Weights

- » Compact dimensions. Lower transportation and logistics costs.  
Diameter: 343 mm  
Height: 215 mm  
Weight: 6.2 kg

### Eco-Design

- » **Environmentally Friendly.**
- » **Non-Polluting.**  
FREE of alkaline and lead batteries
- » **Complete Autonomy.**  
Well-sized solar panel and battery.

### VSS (Vertical Sounder System)

- » Inertial system. **Vertical sounding guarantee.**

### AIRMAR quality assurance

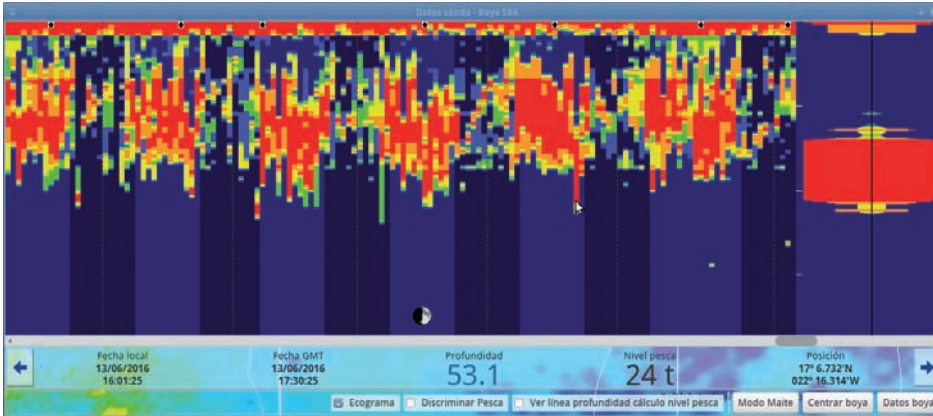
- » High sensitive sounder.
- » Clean presentation.





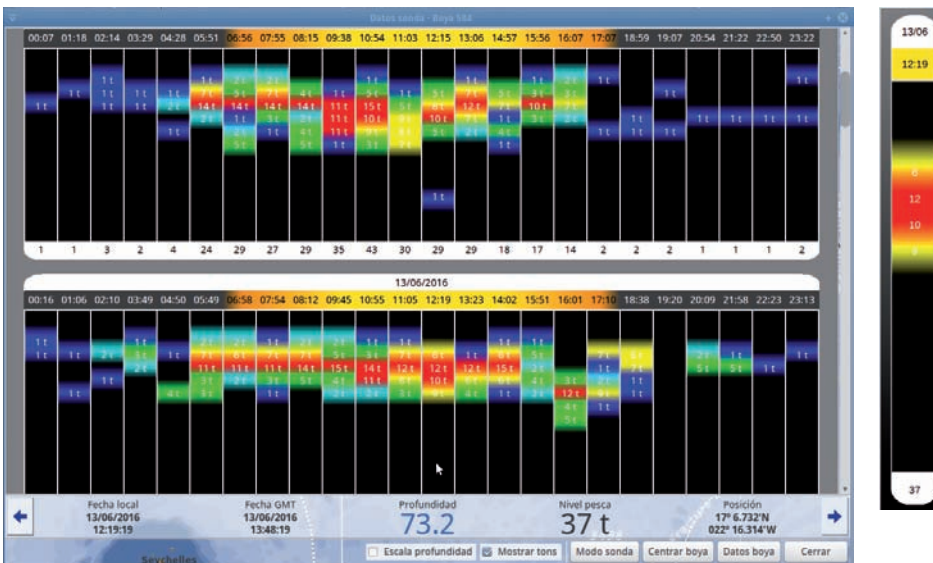
## DUAL SYSTEM **ds** dual System

### 1 SCIENTIFIC MODE



- » 1.6 m/layer resolution.
- » Optional Echogram.
- » Configurable fishing discrimination.

### 2 SUMMARY MODE



- » 6 m/layer resolution.
- » Historical sounder in vertical mode.
- » Estimate biomass per layer.

## INNOVATIONS

- » Tons level.
- » Possibility to filter buoys according to fishing or tons level.
- » Movie Mode. Tool to analyze drifts and currents of the buoy/vessel.
- » Temperature, currents, salinity and thermocline in the water column of every buoy.
- » Compatible with Maxsea, Catsat and Insight Explorer.