



1 1.440 soundings per day.
Soundings every minute. 24 automatic soundings every day with 60 sounding per hour eco-integration.



2 Airmar Transducer.
World leader in ultrasonic sensor technology for marine applications.



3 System permanently open.
Requests at any time with immediate response. Permanently open communications. Global coverage.



4 Double sounder presentation.



Scientific Mode: 1.6 m/layer resolution. Sounder and Echogram.

Summary Mode: 6 m/layer resolution. Historical sounder in vertical mode.

5 Vertical Sounder System.

Inertial system that ensures sounds in a vertical position.



OPERATION MODE

Automatic Mode

- » Automatically sends **24 soundings** daily
- » 60 soundings per hour **eco-integration**.
- » 1 sounding **per minute**.
- » **Fishing concentration** every hour.
- » Automatically sends **24 GPS positions** daily.

Manual Mode

- » **Fortuna Mode.** Sends 5 sounders.
- » **Tracking Mode.** 8 positions every 15 min.
- » **Position Mode.** Sends GPS position.

IRIDIUM System permanently open

- » Always open. **Immediate response**.

FEATURES

Dimensions and Weights

- » Compact dimensions. Lower transportation and logistics costs.
- Diameter: 343 mm
- Height: 215 mm
- Weight: 6.2 kg

Eco-Design

- » **Environmentally Friendly.**
- » **Non-Polluting.**
- » FREE of alkaline and lead batteries
- » **Complete Autonomy.**
- » Well-sized solar panel and battery.

VSS (Vertical Sounder System)

- » Inertial system. **Vertical sounding guarantee.**

AIRMAR quality assurance

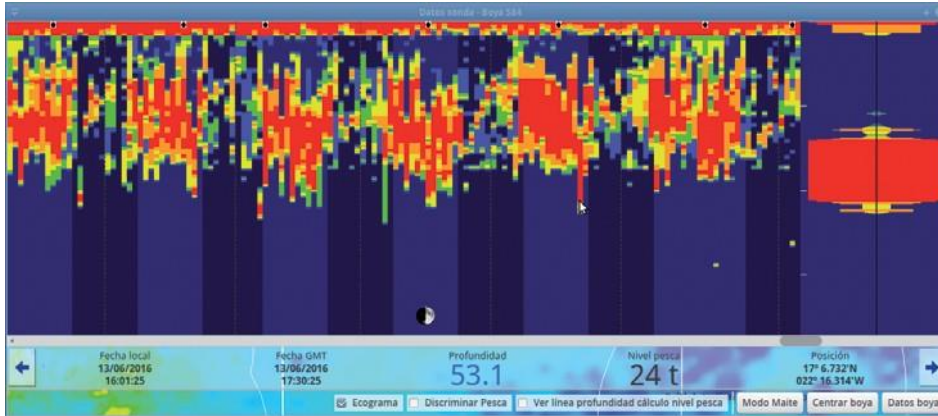
- » High sensitive sounder.
- » Clean presentation.





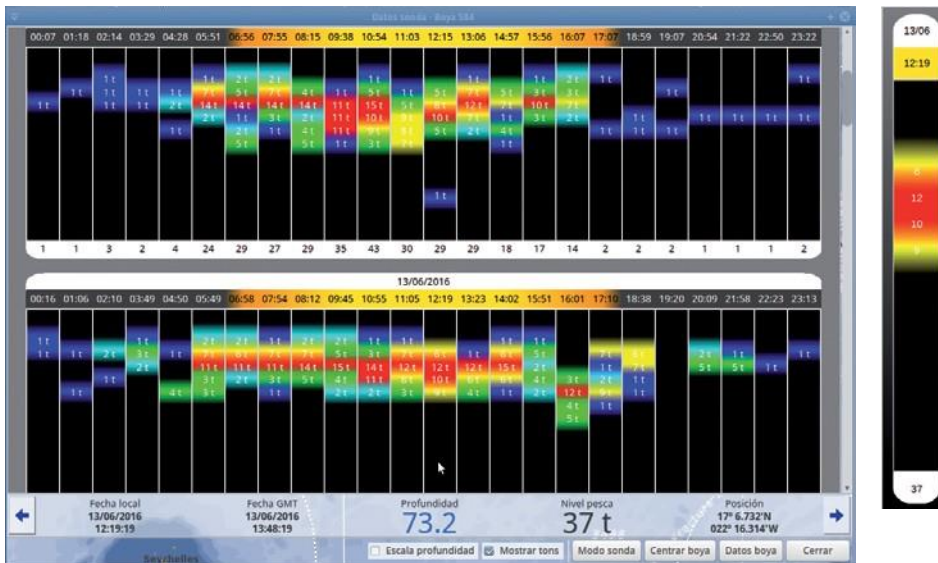
DUAL SYSTEM **ds** dual System

1 SCIENTIFIC MODE



- » 1.6 m/layer resolution.
- » Optional Echogram.
- » Configurable fishing discrimination.

2 SUMMARY MODE



- » 6 m/layer resolution.
- » Historical sounder in vertical mode.
- » Estimate biomass per layer.

INNOVATIONS

- » Tons level.
- » Possibility to filter buoys according to fishing or tons level.
- » Movie Mode. Tool to analyze drifts and currents of the buoy/vessel.
- » Temperature, currents, salinity and thermocline in the water column of every buoy.
- » Compatible with Maxsea, Catsat and Insight Explorer.