

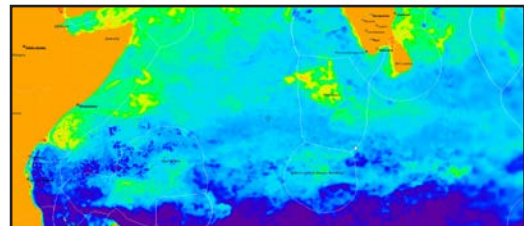
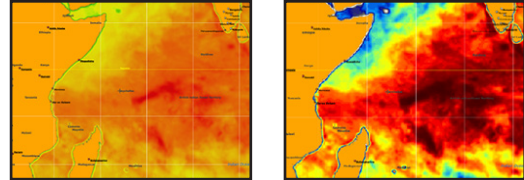


## 1 ADVANTAGES

- » Cost savings in communications, built-in transceiver unit with no need of auxiliary equipments.
- » Offers real-time information (GPS position, course, speed, water temperature, etc).
- » Agile and intuitive system, configurable according to the needs of each user.
- » For-TunaChart software included (temperature, plankton, altimetry, salinity, etc.).
- » Real-time communication, secure and confidential.

## 2 COMMUNICATIONS

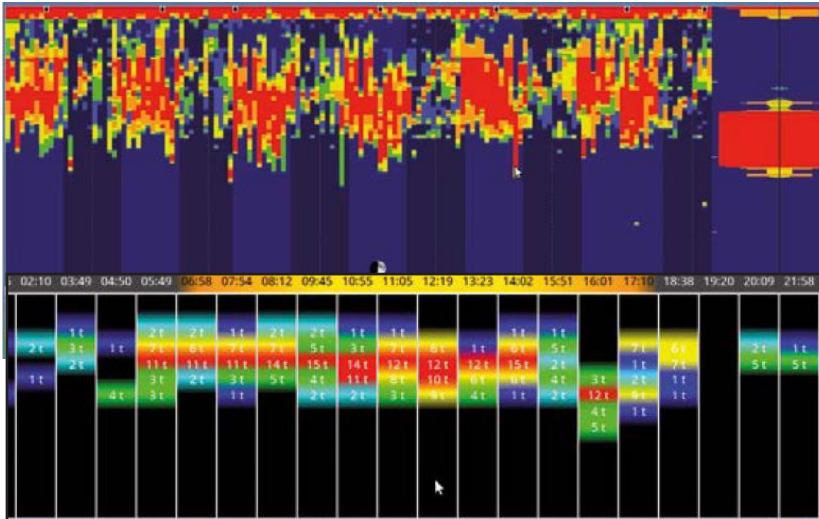
- » Real-time information. Immediate answers (3 minutes approx.).
- » High speed data built-in transceiver unit.
- » Secure and confidential communications.
- » Real world wide global coverage.



Integral management tool that optimizes and facilitates the tuna fishing. This totally autonomous unit offers a full control of the buoys and fishing tools with no need of alternative equipments, since it has its own built-in high-speed satellite communicator.



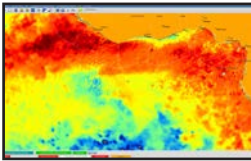
## 3 SOFTWARE



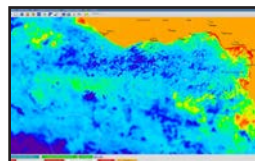
- » Scalable, according to user needs.
- » Ad hoc menus.
- » Agile and intuitive system.
- » Graphics of the fishing history.



Fish Finder history - Dual System



Temperature



Plankton



Admiralty charts

## 4 HARDWARE



- » New hardware, robust construction and suitable for the sea environment.
- » High speed CPU, with no fans.
- » Latest generation microprocessor.